

# Sealife®



## SportDiver S







# SportDiver®

## Turn your Smartphone into a Full-featured Underwater Camera

Introducing the SportDiver S, a new compact and lighter smartphone dive housing that dives to 100 feet / 30 meters, designed for the leisure diver and snorkeler. The SportDiver S will let you capture your underwater adventure with ease, while recording your experience to share with friends and keeping your journey in your memories forever. The SportDiver S lets you grow and expand; add lights, lenses, filters from SeaLife's universal-fit accessory assortment. Your phone is safe in the SportDiver S with SeaLife's dual Leak Avoidance System that continuously monitors the waterproof seal before and throughout your dive.

### Features

**Compatible with** – all iPhones 10 and up including Max sizes, and many Android models (see QR link to fit guide below)

**Easy control** – Large shutter lever and rear control buttons for easy operation, even with dive gloves

**Access popular camera settings** – Change lenses, RAW/JPEG image formats, color correction, zooming and much more

**Shoot photos or record video** – Easily switch between photo and video mode

**Leak Avoidance System** – Includes visual pre-dive pressure test (to ensure the housing is waterproof before diving) and internal moisture alert

**Optional underwater color-correction filter** for bright, colorful underwater photos & videos

**Includes SportDiver camera app for iOS® & Android™** – Free in App Store® or Google Play™ Store

**Holding spring and rubber grip tabs** securely hold phone in place and adds shock-protection

**Expandable** with optional Sea Dragon underwater photo-video lights

**Triple 1/4-20 tripod mounts** – Mounts to Flex-Connect or any tray with standard tripod threads

**Cam-lock sealing mechanism** easily and securely locks waterproof door

**Powered by two AAA batteries** that last over 50 hours of continuous use (included)

**Anti-fog design** when Moisture Muncher capsule is used (one sample included)

**Depth rated to 100ft / 30m** – Each housing is individually depth tested

**Playback photos and videos** – App Playback mode shows full size photos and videos with vertical thumbnail strip to easily locate your shots

For  
**iPhone®**  
& **Android™**  
Phones



Check  
if your  
phone  
fits here





Automatically connects to your smartphone using Bluetooth® wireless technology



Large shutter & control buttons for easy underwater operation



Secure Cam-lock sealing latch



## SeaLife's 30 Year Experience in Designing and Building Underwater Cameras

SeaLife has generations of experience creating and manufacturing underwater cameras, lights and housings. All SportDiver 5 parts and components have been vigorously tested for highest performance and reliability, while the controls and app functions have been created for ease of use. The free SportDiver app lets you turn your phone into a capable underwater camera in only a few minutes!



Expandable with optional Sea Dragon underwater photo-video lights

Settings Menu		Lens	
Lens:	Wide	Wide	
Focus:	Auto	Telephoto	
White Balance:	Auto	Triple	
Temperature(WB):	5000	Ultra Wide	
Tint(WB):	0		
EV:	0		
Aspect Ratio:	4:3		
Image Format:	JPEG		

**Access popular camera settings** – Get creative with your shots by using advanced camera settings. Select lens, video resolution, adjust zoom, exposure, manual focus, white balance, RAW+JPEG mode, video stabilization, underwater white balance, and more. *Camera setting options vary by phone model and operating system.*



**Holding spring and rubber grip tabs** securely hold smartphone in place and adds shock-protection.



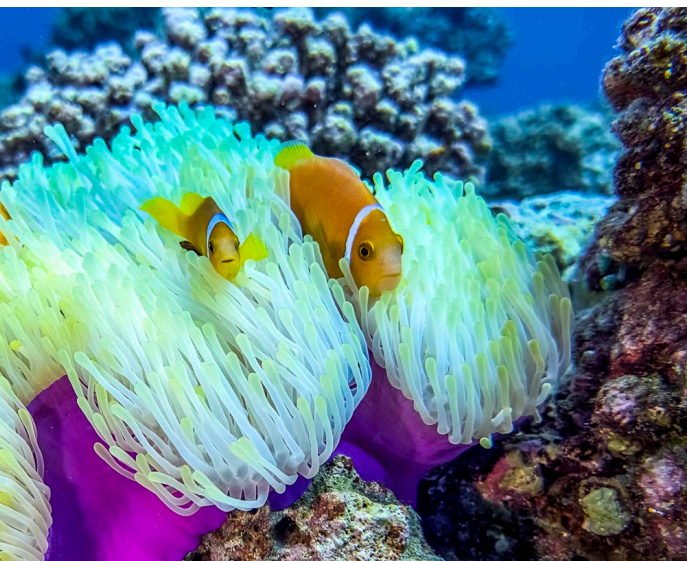
**Available optional lenses and underwater color correction filters** that restore natural underwater colors.





# SeaLife®

## SeaLife has Innovated the Underwater Smartphone Revolution



SportDiver Ultra with Sea Dragon Duo 10K+ light set

As the leading manufacturer of underwater smartphone housings, SeaLife is constantly testing and adding more features and functions by their app and housing developments, as well as universally fitting accessories that let you grow your underwater imaging results. If your passion takes you to new depths, or to a larger phone; consider the SportDiver Ultra, the slightly larger, deeper diving housing that includes some added features (see table below).



#### SportDiver S Differences

The SportDiver S is 16% smaller externally, and is 27% smaller internally than the SportDiver Ultra. The SportDiver S is 16% lighter. The SportDiver S does not have a speaker, alarm notifications are indicated by LED alert.

#### SportDiver Ultra Differences

SportDiver Ultra dives deeper and has more features. The Ultra model holds almost all larger Androids, both models hold ALL iPhones. The Ultra includes a red color correction filter and a protective carry/storage case. The padded Ultra strap is more comfortable and clips on to BC's.

#### All SportDiver Housings

Include a 1/4-20 Standard mounting base for adding lights, trays, grips, arms and more. The SportDiver S has three base mounts, the Ultra has seven. Color Correcting Filters are available for purchase. The port size is the same for both models, all SportDiver lenses, lens mounts, and filters fit.

You'll have everything needed for your first dives with the SportDiver Housing!

Model	SL408 SportDiver S	SL405 SportDiver <sup>ULTRA</sup>
<b>Best For</b>	Leisure/Resort Diver & Snorkeler	Advanced Open Water & Imaging Diver
<b>External Dimensions</b>	8.4" x 4.9" x 2.2" 213.1mm x 125.7mm x 54.8mm	9.1" x 4.9" x 2.4" 231mm x 124mm x 61mm
<b>Internal Dimensions</b>	6.49" x 3.15" x 0.38" 165mm x 80mm x 9.7mm	7.2" x 3.15" x 0.49" 183mm x 80mm x 12mm
<b>Weight</b>	24 oz. / 680g	28.5 oz. / 808g
<b>Leak Detection System</b>	Includes Visible Moisture & Pressure change leak alerts. <b>Not Audible.</b>	Includes Visible and Sounding Moisture & Pressure change leak alerts. <b>Audible.</b>
<b>Max. Depth</b>	100' / 30m	130' / 40m
<b>Fits</b>	All iPhones/Many Androids	All iPhones/Almost all Android
<b>Color Correcting Filter</b>	Optional - Filter not included	Red Color Correcting Filter included
<b>Accessory Mounts</b>	3	7
<b>Compatible SeaLife Flex-Connect Trays</b>	Flex-Connect Single Tray, Dual Tray and Ultra Dual Tray	Flex-Connect Single Tray, Micro Tray and Ultra Dual Tray
<b>Carry/Storage Case</b>	Lightweight Travel Pouch	Custom fit EVA semi-hard case
<b>Included Carry Strap</b>	Adjustable Wrist lanyard	Deluxe Neoprene padded, adjustable strap with BC Clip
<b>Lens Accessory Fitment</b>	All SportDiver Lens Accessories fit	All SportDiver Lens Accessories fit
<b>Other Inclusions</b>	Vacuum Pump; Spare O-rings; O-ring removal tool; O-ring Lube; 2 AAA batteries; Moisture Muncher sample drying capsule; 36 Grip Tabs (S, M & L) - 11 preinstalled; anti-glare foam strips	Vacuum Pump; Spare O-rings; O-ring removal tool; O-ring Lube; 2 AAA batteries; Moisture Muncher sample drying capsule; 36 Grip Tabs (S, M & L) - 11 preinstalled; anti-glare foam strips

info@sealife-cameras.com

SeaLifeCameras

SeaLifeCameras

sealife-cameras.com

Pioneer Research 97 Foster Road, Suite 5 Moorestown, NJ 08057 USA 856.866.9191

Product Features and Specifications may change without notice. © 2025 Pioneer Research